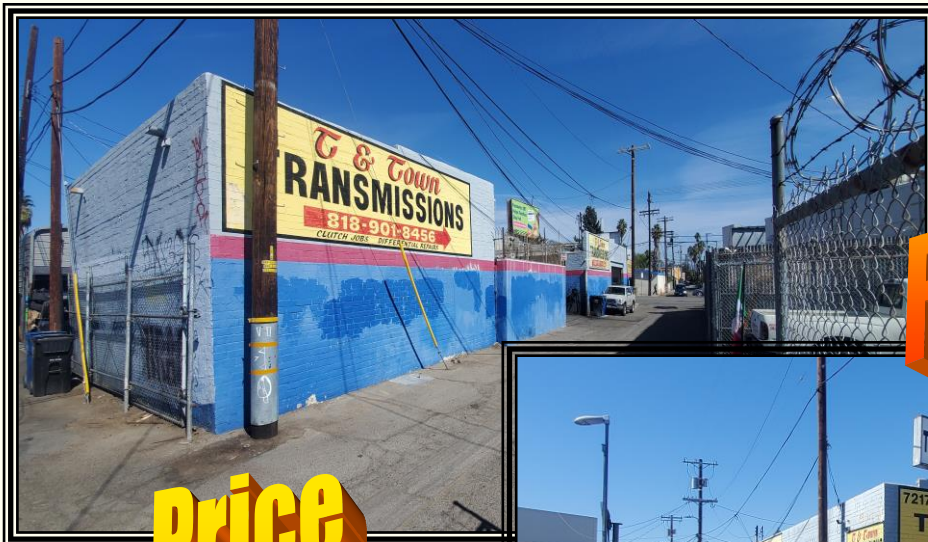


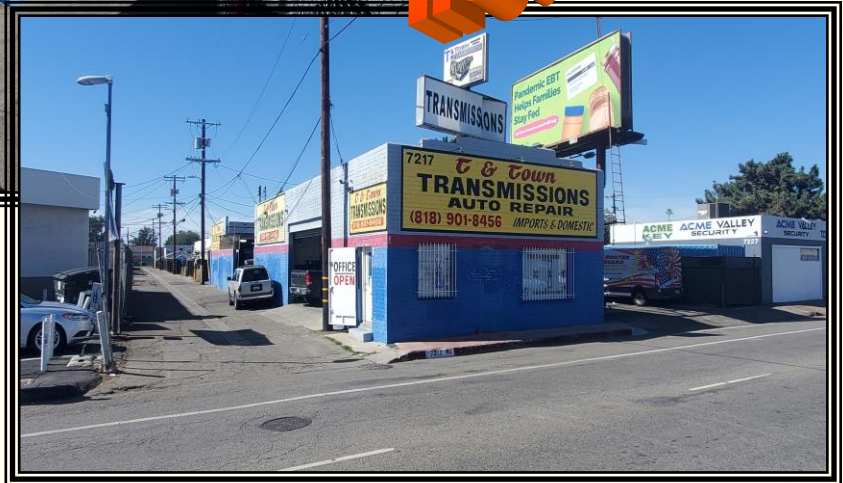
PRIME "VAN NUYS" AUTOMOTIVE REPAIR PROPERTY FOR SALE \$999,000.00

2,581* +/- SQ. FT. OF BUILDING ON 3,899* +/- SQ. FT. OF LAND



**Price
Reduced!!!**

**Price
Reduced!!!**



7217 WOODLEY AVENUE, VAN NUYS, CA 91406

FOR MORE INFORMATION OR A TOUR, PLEASE CONTACT:

Richard L. Paley

richard@paleycommercial.com

DRE: 00966353

(818) 343-3000

* Buyer to Verify

The information contained herein has been obtained from sources we deem reliable. We cannot, however, assume responsibility for its accuracy.

“PRIME” VAN NUYS AUTOMOTIVE REPAIR PROPERTY FOR SALE

LOCATION:	7217 Woodley Avenue Van Nuys, Ca 91406 (Just off the NWC of Woodley Avenue & Sherman Way)
TENANCY:	Property will be delivered Vacant at the close of Escrow
BLDG. & LOT SIZE:	2,581 +/- square feet of buildings* 3,899 +/- square feet of land*
A.P.N. #:	2205-028-019
CURRENT USE:	Transmission Shop
PARKING:	Five (5) Spaces*
PRICE & TERMS:	\$999,000.00 (Cash, cash to a new loan)
ZONING/YEAR BUILT:	LA-C2 – 1* - 1949*
SIGNAGE:	Just off major Corner with Excellent Street Visibility & Signage
COMMENTS:	*Efficient Layout with Office Area & Multiple Work Areas & Storage *Three (3) Lifts Available *Excellent Access to 405 Freeway *Easy to Find Property

FOR MORE INFORMATION OR A TOUR, PLEASE CONTACT:

Richard L. Paley

richard@paleycommercial.com

DRE: 00966353

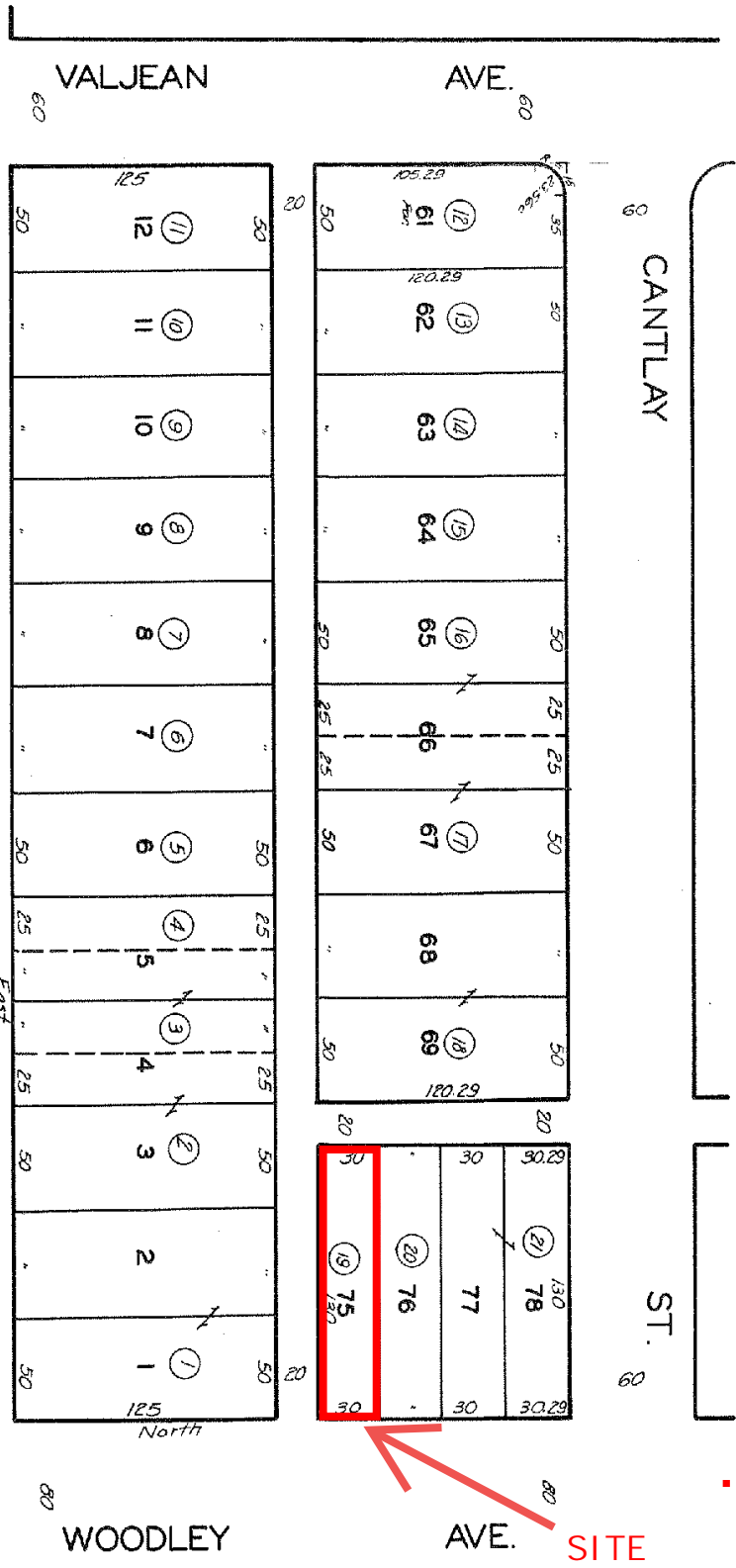
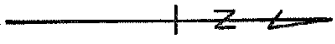
(818) 343-3000

* Buyer to Verify

The information contained herein has been obtained from sources we deem reliable. We cannot, however, assume responsibility for its accuracy.

7217 Woodley Avenue, Van Nuys, CA 91406 PLAT MAP

CODE
16



SHERMAN

CANTLAY

ST.

WOODLEY

AVE. SITE

WAY

TRACT NO. 6872

M. B. 79-64-65

FOR MORE INFORMATION OR A TOUR, PLEASE CONTACT:

Richard L. Paley
richard@paleycommercial.com
 DRE: 00966353

19507 Ventura Boulevard, Tarzana, Ca 91356 ~ Phone (818) 343-3000 ~ Fax (818) 343-3311
www.paleycommercial.com

REVISION
 24/06/2019