

Prime Restaurant Space for Lease 22323 SHERMAN WAY



Major Center!!!

Do NOT Disturb Tenant!!



LOCATION:

22323 Sherman Way
West Hills, Ca 91303

SIZE:

Unit 21-25 – 4,521 +/- square feet

RENTAL RATE:

\$1.75 per square foot, NNN (\$0.59)

OCCUPANCY:

February 1, 2022

PARKING:

Excellent front parking

COMMENTS:

- * Adjacent to Ralph's Supermarket & Athletic Society Gym
- * High traffic count of over 30,000 +/- cars per day
- * Prominent signage on building & monument sign
- * Walking distance to many area amenities
- * Just west of Topanga Canyon Boulevard

FOR MORE INFORMATION OR A TOUR, PLEASE CONTACT:

Richard L. Paley

richard@paleycommercial.com

DRE: 00966353

Howard Bass

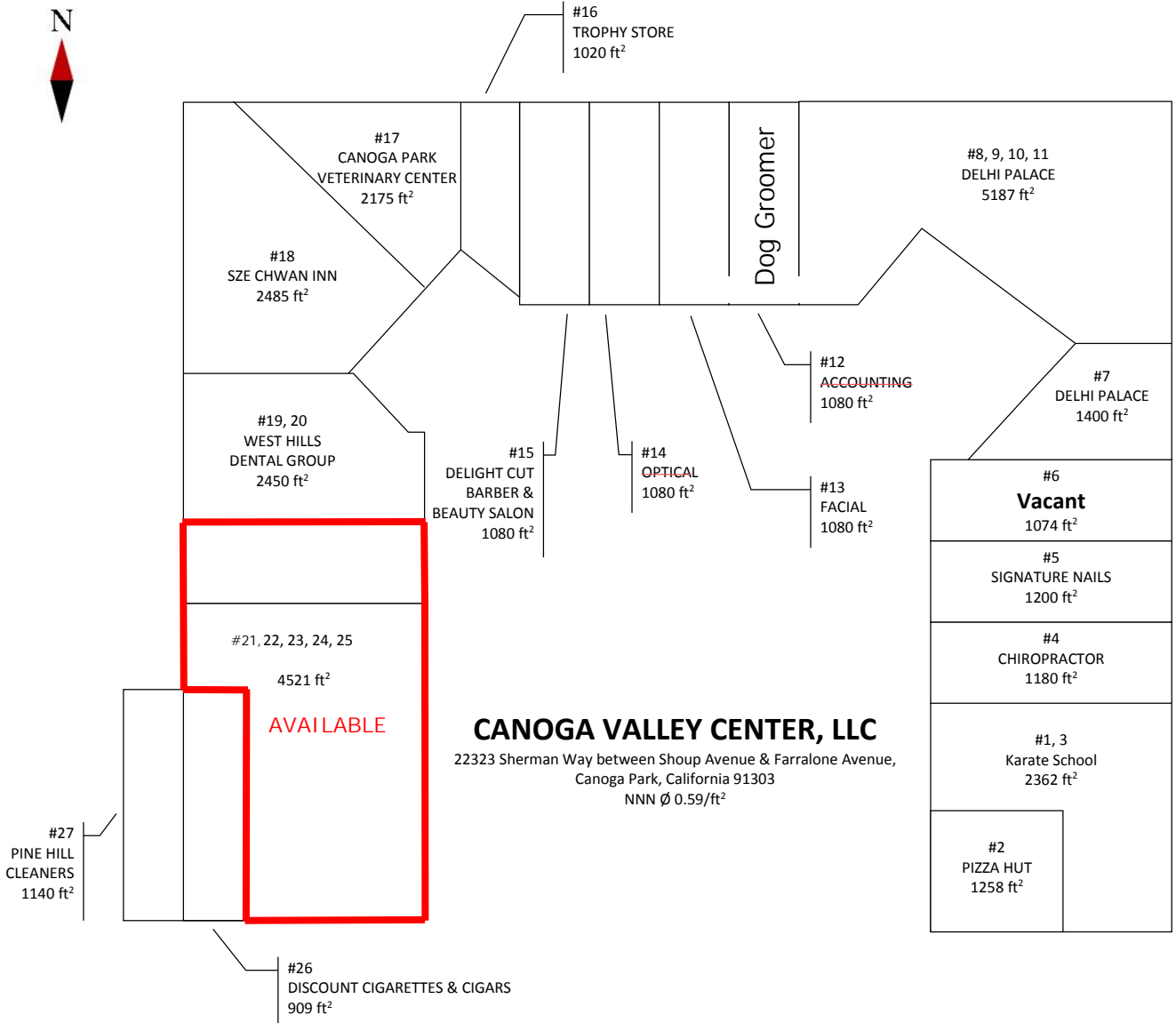
howard@paleycommercial.com

DRE: 00940993

19507 Ventura Boulevard, Tarzana, Ca 91356 ~ Phone (818) 343-3000 ~ Fax (818) 343-3311
www.paleycommercial.com



Shoup Avenue



CANOGA VALLEY CENTER, LLC

22323 Sherman Way between Shoup Avenue & Farralone Avenue,
Canoga Park, California 91303
NNN \emptyset 0.59/ft²

Sherman Way